

VST Original

VS-WA **Inner View Lens** SERIES

Diagnose your bottle's inner defects at a distance.



Long Working Distance - Multitudes of Lighting Options

VS Technology Corporation

HQ 1-9-19 Azabudai, Minato-ku, Tokyo, Japan 106-0041
TEL 03-3560-6668 FAX 03-3560-6669



VS TECHNOLOGY
MACHINE VISION OPTICS

Capture the inner surface of containers at a distance with the Inner View Lens

Application Potential

Single shot, quick can and bottle Inner surface inspection is critical for the FMCG, Automobile and Metal Component manufacturing Industries.



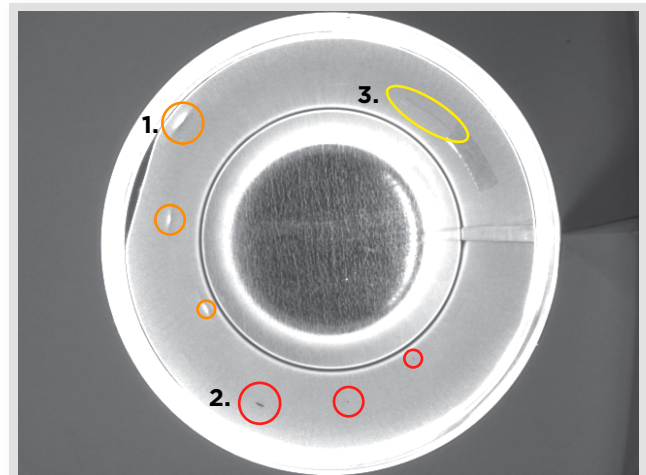
Features

The VS-WA06520/S Inner View Lens has a manual Iris/Focus, which is critical for maximizing its DOF.

VST's unique optical design allows there to be some space between the lens and the object permitting the placement of lighting devices. With standard fisheye lenses or lenses that have a short focal length, the WD is also short and which doesn't leave any room for lighting.

This lens solves that issue.

Detect Miniscule Defects



While inspecting a can with a height of 120mm and a 85mm diameter, various defects can be easily detected.

1. Dents
2. Black Dots - smallest one is less than 0.1mm
3. Hair - Diameter approx. 0.1mm

International Sales Offices

<https://vst.co.jp>

VS Technology HQ (Tokyo)
TEL: +81-3-3560-6668

VST Europe (Paris)
TEL: +33-1-8288-5798

VST Thailand (Bangkok)
TEL: +662-260-0912

VST Korea (Seoul)
TEL: +82-2-2183-3848

VST Taiwan (Taipei)
TEL: +886-2-2531-2036

VST America (Chicago)
TEL: +1-847-952-3800

VST Europe (Winterthur)
TEL: +41-52-508-0109

VST Poland (Warsaw)
TEL: +48-22-332-5731

VST Vietnam (Hanoi)
TEL: +84-24-6327-8566

VST Shenzhen (Shenzhen)
TEL: +86-755-8273-1420

VST Taiwan (Hsinchu)
TEL: +886-3-668-1381(ext.9)

VST America (Santa Clara)
TEL: +1-408-753-5115

VST Europe (Amsterdam)
TEL: +31-20-305-1310

VST Russia (Moscow)
TEL: +7-903-173-7231

VST India (Bengaluru)
TEL: +91-80888-31893

VST Shenzhen (Shanghai)
TEL: +86-21-6255-0725

VST Taiwan (Kaohsiung)
TEL: +886-7-586-8957

VST Mexico (Guadalajara)
TEL: +52-33-300 2-4076